



MAURIZIO MACHELLA

Arranger, Interpreter, Publisher

Italia

About the artist

Famous musician and organist, known throughout the world.

Italian publisher, researcher and organist.

The I.net Greatest Organ Music Resource in the World.

The most complete private library of music scores for organ and harpsichord.

Published rare scores of organ and harpsichord music with Armelin Musica of Padova (www.armelin.it) and with the sheet music world center: "Free-scores.com".

More than 1,8 million downloads!

Remember ... all this work, if you can, make me an offer on Paypal.

Thanks!

Qualification: Organist

Personal web: <http://www.facebook.com/home.php?ref=home#/profile.php?id=100000082741780&ref=name>

About the piece



Title: BATALHA DE 6. TOM
Composer: Araujo, Pedro de
Licence: Public domain
Publisher: MACHELLA, MAURIZIO
Instrumentation: Organ solo
Style: Classical

MAURIZIO MACHELLA on [free-scores.com](http://www.free-scores.com)

<http://www.free-scores.com/Download-PDF-Sheet-Music-giordaniello.htm>

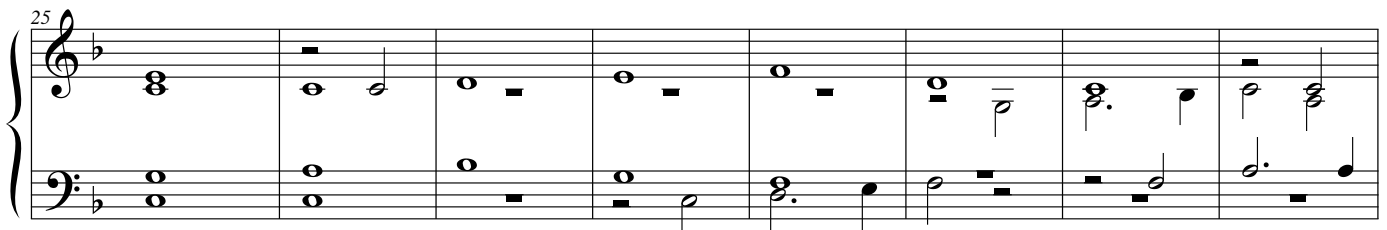
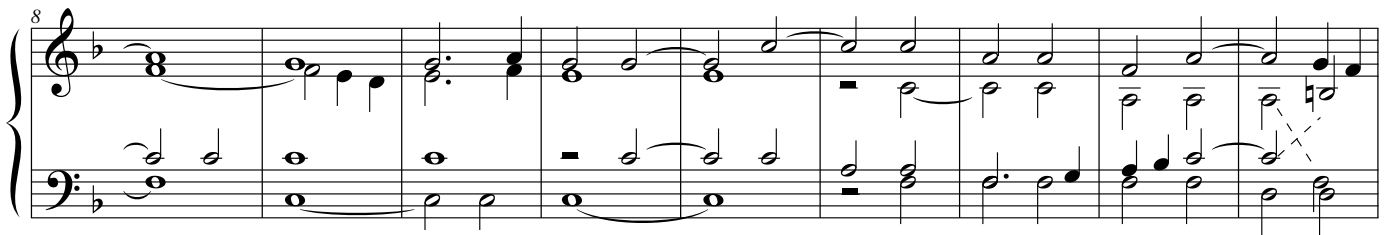
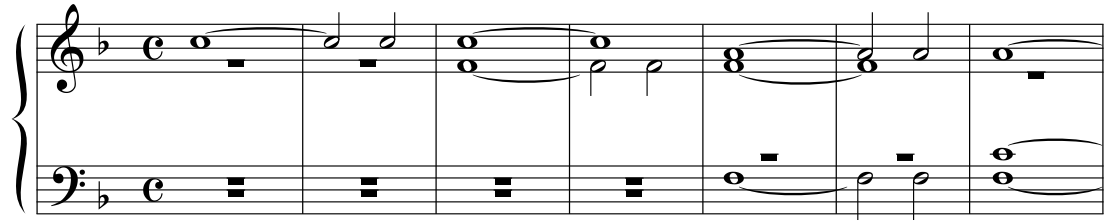
- Contact the artist
- Write feedback comments
- Share your MP3 recording
- Web page and online audio access with QR Code :



Batalha de 6. tom

a cura di Maurizio Machella

Pedro de Araujo
(1662 - 1705)



41

System 1 (Measures 41-44): Treble clef, key of B-flat major. Measures 41-43 feature a continuous eighth-note melody in the right hand, while the left hand provides a steady eighth-note accompaniment. Measure 44 contains a whole rest in the right hand and a descending eighth-note scale in the left hand.

45

System 2 (Measures 45-48): Measures 45-47 show the right hand with whole notes and the left hand with eighth-note accompaniment. Measure 48 features a triplet of eighth notes in the right hand and a triplet of eighth notes in the left hand.

49

System 3 (Measures 49-52): Measures 49-50 feature a triplet of eighth notes in the right hand and a triplet of eighth notes in the left hand. Measures 51-52 show a descending eighth-note scale in the right hand and a steady eighth-note accompaniment in the left hand.

53

System 4 (Measures 53-56): Measures 53-54 feature a steady eighth-note accompaniment in the right hand and a steady eighth-note accompaniment in the left hand. Measures 55-56 show a descending eighth-note scale in the right hand and a steady eighth-note accompaniment in the left hand.

57

System 5 (Measures 57-60): Measures 57-58 feature a steady eighth-note accompaniment in the right hand and a steady eighth-note accompaniment in the left hand. Measures 59-60 show a descending eighth-note scale in the right hand and a steady eighth-note accompaniment in the left hand.

61

System 6 (Measures 61-64): Measures 61-62 feature a steady eighth-note accompaniment in the right hand and a steady eighth-note accompaniment in the left hand. Measures 63-64 show a descending eighth-note scale in the right hand and a steady eighth-note accompaniment in the left hand.

65

System 1 (Measures 65-68): Treble clef contains eighth-note chords and sixteenth-note runs. Bass clef contains a half note, followed by eighth-note and sixteenth-note patterns. Measure 68 features a dashed line indicating a tie or continuation.

69

System 2 (Measures 69-72): Treble clef has a half note, a sixteenth-note run, and eighth-note chords. Bass clef has a sixteenth-note run, a half note, and eighth-note patterns. Measure 72 has a dashed line.

73

System 3 (Measures 73-76): Treble clef contains eighth-note and sixteenth-note runs. Bass clef contains eighth-note and sixteenth-note patterns. Measure 76 has a dashed line.

77

System 4 (Measures 77-80): Treble clef has eighth-note chords and a half note. Bass clef has eighth-note and sixteenth-note patterns. Measure 80 has a dashed line.

81

System 5 (Measures 81-84): Treble clef has eighth-note chords and runs. Bass clef has eighth-note and sixteenth-note patterns. Measure 84 has a dashed line.

85

System 6 (Measures 85-88): Treble clef features sixteenth-note triplets. Bass clef has half notes. Measures 86-88 each contain a triplet of eighth notes in the treble and a half note in the bass.

89

93

97

101

105

109

113

System 113-116: Treble clef, key of B-flat major. Measures 113-116 show a melodic line in the right hand with eighth and sixteenth notes, and a bass line with whole notes and rests.

117

System 117-120: Treble clef, key of B-flat major. Measures 117-120 show a melodic line in the right hand with eighth and sixteenth notes, and a bass line with whole notes and rests.

121

System 121-124: Treble clef, key of B-flat major. Measures 121-124 show a melodic line in the right hand with eighth and sixteenth notes, and a bass line with whole notes and rests.

125

System 125-128: Treble clef, key of B-flat major. Measures 125-128 show a melodic line in the right hand with eighth and sixteenth notes, and a bass line with whole notes and rests.

129

System 129-132: Treble clef, key of B-flat major. Measures 129-132 show a melodic line in the right hand with eighth and sixteenth notes, and a bass line with whole notes and rests.

133

System 133-136: Treble clef, key of B-flat major. Measures 133-136 show a melodic line in the right hand with eighth and sixteenth notes, and a bass line with whole notes and rests. The system ends with a double bar line and a common time signature 'C'.

137

System 137-140: Treble clef has whole rests. Bass clef has eighth-note patterns: measures 137-139 have a quarter rest followed by eighth notes; measure 140 has a half note.

141

System 141-144: Treble clef has eighth-note patterns; Bass clef has whole rests in measures 141-143 and an eighth-note pattern in measure 144.

145

System 145-148: Treble clef has eighth-note patterns and octaves; Bass clef has eighth-note patterns. Measure 146 has a whole rest in the treble.

149

System 149-152: Treble clef has eighth-note patterns; Bass clef has eighth-note patterns with an octave sign (#8) in measures 149, 150, and 152.

153

System 153-156: Treble clef has whole notes and eighth-note patterns; Bass clef has eighth-note patterns.

157

System 157-160: Treble clef has eighth-note patterns and a half note; Bass clef has eighth-note patterns. Measure 160 has a dashed line connecting the treble and bass staves.

161

System 1 (measures 161-163) features a treble and bass staff in B-flat major. The treble staff contains a continuous eighth-note melody, while the bass staff provides a steady eighth-note accompaniment.

164

System 2 (measures 164-165) continues the eighth-note patterns from the previous system, maintaining the same melodic and harmonic structure.

166

System 3 (measures 166-168) introduces a change in the treble staff, which now features a melody of dotted eighth and sixteenth notes. The bass staff continues with eighth-note accompaniment.

169

System 4 (measures 169-171) shows the treble staff with a more complex melody involving dotted eighth and sixteenth notes. The bass staff has a brief rest in measure 169 before rejoining with eighth notes.

172

System 5 (measures 172-175) features a shift to a more harmonic texture. The treble staff uses chords and a melodic line with a slur, while the bass staff plays a simple eighth-note accompaniment.

176

System 6 (measures 176-179) begins with a whole rest in the treble staff for two measures, followed by a melodic entry. The bass staff continues with a consistent eighth-note accompaniment.

180

System 180-183: Treble and bass staves with a key signature of one flat and a common time signature. The music features a steady eighth-note accompaniment in the bass and a melody of eighth-note chords in the treble.

184

System 184-187: Continuation of the previous system, maintaining the same musical texture and notation.

188

System 188-191: Continuation of the previous system, maintaining the same musical texture and notation.

192

System 192-195: Continuation of the previous system, maintaining the same musical texture and notation.

197

System 197-200: Continuation of the previous system, maintaining the same musical texture and notation.