

Suite 1 for Cello Solo

Transposed for viola

Johann Sebastian Bach
BWV 1007

Prélude

3

5

7

9

11

13

15

17

19



3

6

9

12

15

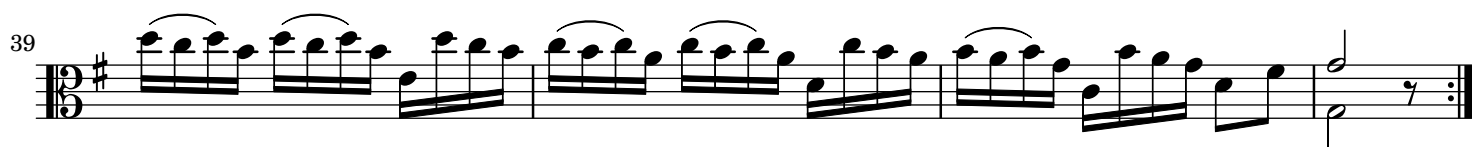
18

21

24

27

30



Sarabande

5
BWV 1007

Measures 1-14 of the Sarabande, BWV 1007. The piece is in 3/4 time, D major, and 16th-century style. The notation includes various ornaments (trills) and slurs. Measure numbers 5, 8, 11, and 14 are indicated at the start of their respective staves.

Menuet 1

BWV 1007

Measures 1-20 of the Menuet 1, BWV 1007. The piece is in 3/4 time, D major, and 16th-century style. The notation includes various ornaments (trills) and slurs. Measure numbers 6, 11, 16, and 20 are indicated at the start of their respective staves.

6
Menuet 2

BWV 1007

Measures 1-19 of Menuet 2, BWV 1007. The piece is in G minor, 3/4 time. The notation is in bass clef. Measures 1-6 show the first phrase, ending with a repeat sign. Measures 7-12 show the second phrase, also ending with a repeat sign. Measures 13-19 show the third phrase, concluding with a final cadence.

Gigue

BWV 1007

Measures 1-30 of Gigue, BWV 1007. The piece is in G major, 6/8 time. The notation is in bass clef. Measures 1-6 show the first phrase, ending with a repeat sign. Measures 7-12 show the second phrase, also ending with a repeat sign. Measures 13-18 show the third phrase, concluding with a final cadence. Measures 19-24 show the fourth phrase, ending with a repeat sign. Measures 25-30 show the fifth phrase, concluding with a final cadence.